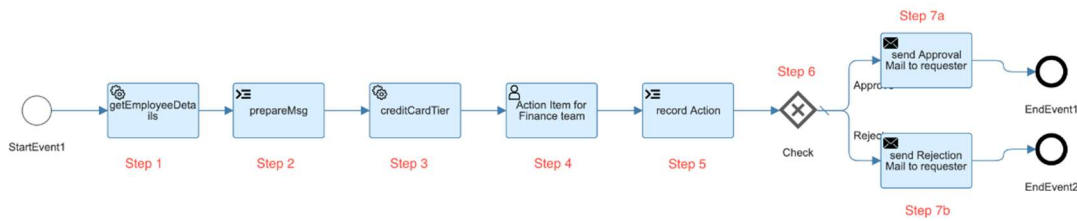


## SAP Business Technology Platform Cloud Workflow and BPM Training

<https://www.anubhavtrainings.com/btp-cloud-workflow-training>



**Target Audience:** You are working as an SAP consultant in companies. Now you see there is a shift in industry towards the cloud-based solutions. SAP BTP plays a critical role in the process of transforming to intelligent enterprise. Any SAP Consultant, ABAP Developer, Workflow consultant, SAP Integration experts can join the course.

**Prerequisites-Basic** knowledge of Basic programming, Knowledge of database, SAP Basic knowledge, Basic knowledge of JS will be helpful.

**Duration: 25 Hours – A promise of no copy paste**

### ▶ What you get by joining our training

- 25 Hours of Detailed Lecture with Videos
- Support for issues and deployment (no job support)
- Presentation and Whiteboards
- Best-in-class cutting edge content
- Latest concepts on Business Application Studio
- End to End development with integration to S/4HANA APIs
- API management using API HUB
- Cross Integration also covered

**Our Course Page:**

<https://www.anubhavtrainings.com/btp-cloud-workflow-training>

<https://www.anubhavtrainings.com/scp-cloud-platform-training>

Say no to trainer who only teach copy-paste of code

## SAP Business Technology Platform Cloud Workflow and BPM Training

<https://www.anubhavtrainings.com/btp-cloud-workflow-training>

### ▶ About the Course

In this Learn SAP BPM (Business Process Management) and Cloud Workflow we have covered basics of workflow to advance development of workflows. SAP BTP BPM provides you a set of Standard workflow packages for integrating cross platform/application business processes. These processes can be downloaded, adapted, customized, deployed and monitor in BTP and managed using cloud foundry environment.

### ▶ In this Training of Business Technology Platform Workflow, we will:

- First, we will start with a short theory to understand what is BTP
- Then we will learn general concepts of BTP platform, services, environments, and runtimes
- Then we will get starting with our development environment setup with entitlements
- After that, we will take Business application studio setup for workflow and use template to create first workflow
- We will then create workflow with various types of tasks like mail task, service, user task and script tasks
- After that, we will add gateways for decision making
- Once we have developed our workflows, we will learn how to package mtar and deploy it to the cloud foundry, how to configure workflow for business user and manage end to end workflow to Q system.
- Learn Latest Concepts of BAS with workflow modularization
- Learn API management using API HUB and the workflow API provided by SAP.
- After that, we will call workflow API using postman with OAuth 2.0 authentication
- We will design and develop and complete end to end scenario by using workflow
- We will start with process flexibility and how to adapt the standard sap workflows for finance opex planning
- We will use process visibility and flexibility to monitor and tweak standard flow
- Finally deploy our workflow to cloud and do monitoring with dashboard

<https://www.anubhavtrainings.com/scp-cloud-platform-training>

Say no to trainer who only teach copy-paste of code

## COURSE CONTENT (UNIT WISE)

### Unit 1 – What is SAP BPM and workflow (Demo Session)

- Definition of SAP BTP and motivation
- What is BTP Workflow
- Create Dev space in BAS
- Manage your first simple workflow
- FAQs
- Process to join the video mode training

### Unit 2 – Introduction to BTP

- On premise v/s Cloud offerings
- What cloud offers
- What is SAP BTP?
- What BTP offers broadly – Environment, Subscriptions and Instances
- SAP BTP Cloud Foundry Organization
- Introduction to backing service
- BTP Service Catalogs
- Introduction to Entitlements



### Unit 3 – Setup BTP environment for BTP Workflow

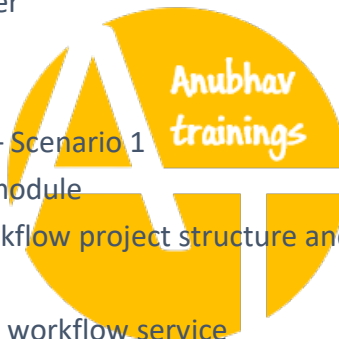
- Introduction to backing service and service key
- BTP Service Catalogs
- Introduction to Entitlements & Quota Plans
- What is BTP Destination
- What is Role Collection
- What is Business Application Studio
- Starting Workflow Booster
- Understand what was created on execution of booster

#### Unit 4 – Introduction to BTP Workflow management

- What is a Business Process
- What is workflow
- Workflow management
- Service offering
- Why SAP BTP Workflow management?
- Key benefits
- Run BTP booster to setup Cloud Workflow management
- Behind the scenes of booster

#### Unit 5- Workflow Development – Episode 1

- Behind the scenes of booster
- Setting up free ES5 System
- Create new destination
- Create a Simple Workflow – Scenario 1
  - Initialize workflow module
  - Understand the workflow project structure and Tasks type
  - Use of mta.yaml file
  - Service binding with workflow service



#### Unit 6- Workflow Development – Episode 2

- What is Context
- Workflow Tasks Type
- Create a Simple Form UI for Leave Request
- Bind the context data with form layout
- Configure user decision task
- Update context at runtime
- Deploy the simple workflow

### **Unit 7- Workflow Development – Episode 3 – Let the ship sail**

- Package and Deploy the simple workflow
- SAP Workflow management – big picture
- Test our workflow using SAP Workflow management cockpit – Monitor workflow Definitions
- Understand the workflow instances (the runtime)
- Access workflow using My Inbox Application
- Update workflow and deploy changed version
- Understand workflow statuses

### **Unit 8- Connectivity and SAP Cloud Connector**

- What is Cloud Connector
- Install Cloud Connector
- Configure SAP Cloud connector with BTP and On-premise system
- Create destination S4HANA for our internal company system



### **Unit 9- Working with service task**

- SAP BTP Cloud workflow personas
- Read sample data from ES5 service
- Run and test workflow to display context
- What is an API
- Trigger workflow using API
- Trigger workflow using Postman

### **Unit 10- Working with APIHUB**

- Introduction to SAP Business API HUB
- Explore the API for SAP BTP Workflow
- Start workflow instance from API Sandbox
- Explore BTP Security aspect
- Inject test scope
- Trigger workflow using Postman with OAuth Bearer token
- Test the execution of an API

### Unit 11 – Mail Task, Gateways

- What is Gateway in Workflow
- Configuration of destination for sending email using workflow
- Design end to end workflow for new use case

### Unit 12 – Custom UI5 Integration

- Working with deadline monitoring
- Enhance mail body of type HTML
- Adding custom UIs for Workflow
- SAP UI5
- Microservice for Workflow and UI
- HTML5 Repository
- Managed App Router
- Destination Service
- XSUAA Service



### Unit 13 - Custom UI5 Integration E02

- Types of the custom UI
- Our use Case Scenario 4
- Adding Managed App Router
- Add the UI5 Component and understand the app components
- Task Model and Workflow API Integration
- Deploy and test workflow with custom Task UI

### Unit 14 - Employee Hire – E03

- Extending Employee hire workflow scenario with form UI
- Trigger email dynamically to candidate
- Working with Workflow Custom Start UI
- Deploy custom start UI to Fiori Launchpad

### Unit 16 : Business Rule Service

- Workflow Scenario S6 – using Rule Service
- What is Business Rule and Why
- Business Rules Service – Introduction
- Artefacts of Rule Project
- Develop Business Rule
- Consume BTP Business Rule using API

### Unit 15: Sub-flows

- What is sub-flows
- Working with Parallel sub flow elements
- Scenario Use-case 5

### Unit 16 : Business Rule Service

- Workflow Scenario S6 – using Rule Service
- What is Business Rule and Why
- Business Rules Service – Introduction
- Artefacts of Rule Project
- Develop Business Rule
- Consume BTP Business Rule using API



### Unit 17 : Consume Rules in Workflow

- 
- Workflow Scenario S6 – E02
- Develop Table and service in ABAP system
- Develop workflow with POST request
- Calling the Rules API from workflow

### Unit 18 : Translation and Sharing

- Translation of workflow texts
- Sharing with different developers

### Unit 19- Transport Workflow & CI/CD pipeline using Jenkins

- What is CI/CD
- SAP BTP CI/CD Management
- Configure project for Continuous Integration
- Configure and trigger build from git webhook
- SAP BTP Cloud Transport Management service
- Create Landscape
- Configure Continuous Delivery

### Unit 20 – Process Templates

- What is process template
- Steps to create process template
- What is process variant
- Create first process template
- Create process variant

### Unit 21 – Process Flexibility

- Configure process visibility scenario
- Manage Packages
- Understanding process flexibility cockpit
- Trigger and analyse custom business process variant



### Unit 22 – Standard Workflow Content

- Consuming workflow content for no-code business configuration
- Available use cases
- Example Scenario 8: CAPEX (capital expenditure)
- Digitize workflows, manage decisions, and gain end-to-end visibility
- Discover and import Live Process Package
- Create and Configure Process variant
- Manage and Configure Decisions
- Configure and Activate visibility Scenario
- Run the Capital Expenditure Live Process



### Unit 23 – Employee On-boarding

- Configure API Business Hub destination
- Configure system in business rules
- Import business rules from API Business Hub
- Deploy business rules
- Download and import workflow sample application
- Build and deploy workflow
- Create visibility scenario
- Add workflow to visibility scenario
- Configure visibility scenario
- Activate visibility scenario
- Set up sample events for workflow
- Process the Employee Onboarding events
- View the process visibility workspace
- Execute the workflow sample application
- View process visibility workspace
- Continue with the workflow execution
- View process visibility workspace for completed workflow

